

Assembly instructions for a table frame (two columns) and a table top.

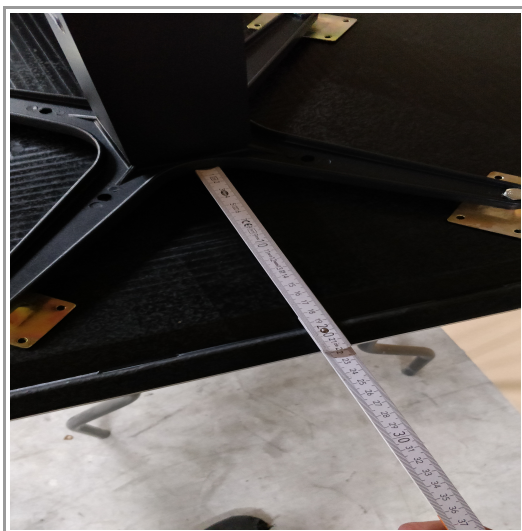
1.) For the assembly of the table top and the table frame you need the following materials:

- Table frame
- Table top
- folding rule
- screwdriver or cordless screwdriver
- wrench
- 2x complete mounting sets



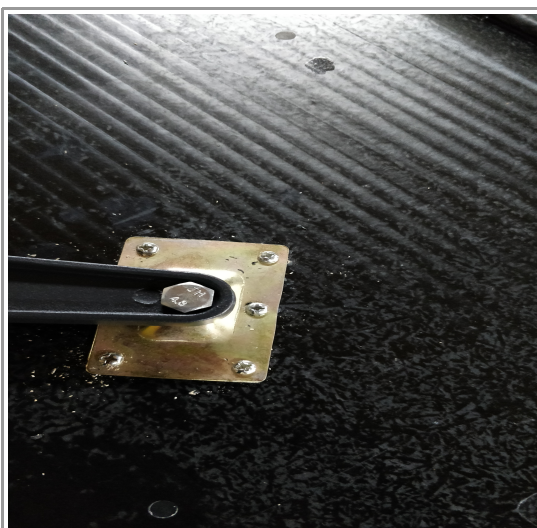
2.) Center the frame on the table top:

Place the table frame parallel to the table top on the underside of the table top. Now measure all six sides with the folding rule as shown in the picture, so that the distance is the same on the opposite sides.



3.) Mounting of the table top:

Now tighten the screws in the holes provided. 5x screws must be screwed per mounting plate. Make sure that the frame does not move.



ABC
WORLDWIDE
www.stapelstuhl24.de